



Canning Road, Aldershot
£300,000


MARTIN & CO

Canning Road, Aldershot

- Two double bedrooms
- No onward chain
- Driveway parking
- Spacious rear garden
- Modern kitchen
- Utility room
- Well presented bathroom
- Downstairs W/C
- Council tax Band: C
- EPC: D (63)



This well-presented two double bedroom terraced home is offered to the market with no onward chain and benefits from off-road parking, making it a convenient and ready-to-move-into option.



This well-presented two-bedroom terraced home is offered with no onward chain and benefits from off-road parking, making it a convenient and ready-to-move-into option.

The ground floor features a generously sized living room, perfect for relaxing or entertaining, with large windows that bring in plenty of natural light. The modern kitchen is well-equipped and includes ample countertop and storage space, as well as a utility area for added practicality. A downstairs WC adds to the convenience.

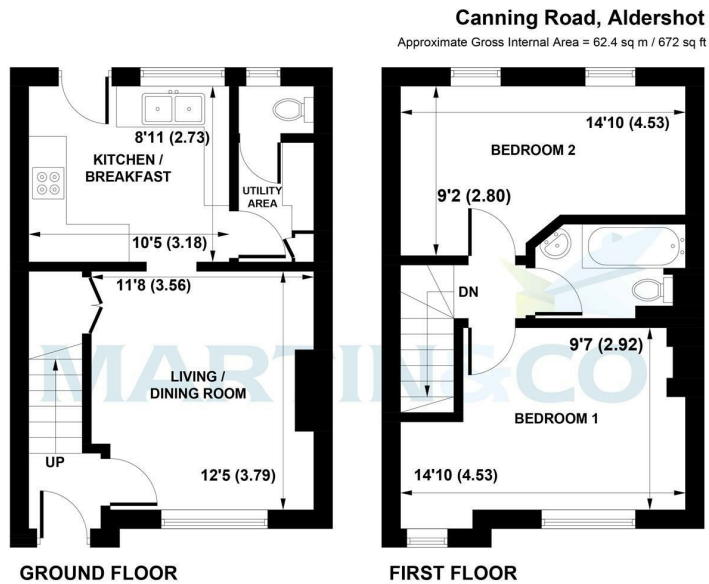
Upstairs, both double bedrooms are bright and inviting, each featuring two windows that create a light and airy feel. There is also ample storage space to help keep your home organised. The bathroom is in excellent condition, fitted with a shower over the bath for versatility.

Outside, the property benefits from off-road parking and a low-maintenance garden as well as the roof recently being replaced, offering a private space to enjoy outdoor activities.

Ideally located, the home is within less than half a mile of sought-after schools, local shops, and amenities. Additionally, it is less than a mile from the train station, providing direct links to London Waterloo, making it an excellent choice for commuters.

This home offers comfort, convenience, and a great location.

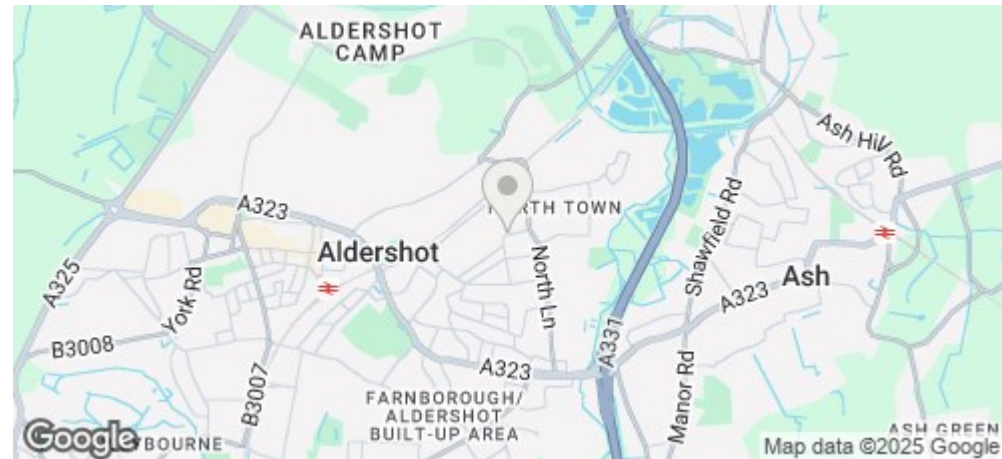




This plan is for layout guidance only. Not drawn to scale unless stated. Windows and door openings are approximate. Whilst every care is taken in the preparation of this plan, please check all dimensions, shapes and compass bearings before making any decisions reliant upon them. (ID 1157842)
Produced by BlueSky Estate Agency Services on behalf of Martin&Co

Energy Efficiency Rating		Current	Potential
Very energy efficient - lower running costs			
(92 plus) A			63
(81-91) B			
(69-80) C			
(55-68) D			
(39-54) E			
(21-38) F			
(1-20) G			
Not energy efficient - higher running costs			
England & Wales		EU Directive 2002/91/EC	

Environmental Impact (CO ₂) Rating		Current	Potential
Very environmentally friendly - lower CO ₂ emissions			
(92 plus) A			90
(81-91) B			
(69-80) C			
(55-68) D			
(39-54) E			
(21-38) F			
(1-20) G			
Not environmentally friendly - higher CO ₂ emissions			
England & Wales		EU Directive 2002/91/EC	



Martin & Co Aldershot
173 Victoria Road, Aldershot, Hampshire,
GU11 1JU
Aldershot@martinco.com

01252 311974
<http://www.martinco.com>



Accuracy: References to the Tenure of a Property are based on information supplied by the Seller. The Agent has not had sight of the title documents. A Buyer is advised to obtain verification from their Solicitor. Items shown in photographs including but not limited to carpets, fixtures and fittings are not included unless specifically mentioned within the sales particulars. They may however be available by separate negotiation. Buyers must check the availability of any property and make an appointment to view before embarking on any journey to see a property. No person in the employment of the agent has any authority to make any representation about the property, and accordingly any information given is entirely without responsibility on the part of the agents, sellers(s) or lessors(s). Any property particulars are not an offer or contract, nor form part of one. **Sonic / laser Tape:** Measurements taken using a sonic / laser tape measure may be subject to a small margin of error. **All Measurements:** All Measurements are Approximate. **Services Not tested:** The Agent has not tested any apparatus, equipment, Fixtures and Fittings or services and so cannot verify that they are in working order or fit for the purpose. A Buyer is advised to obtain verification from their Solicitor or Surveyor.

